

Economy Model

Affordable for every budget

TP-6000

The TP-6000 is an economy automatic strapping machine for PP strapping (8 mm - 15.5 mm). With the proven quality and competitive price, it is the most cost effective solution for general applications.



15F-1, NO. 17, SEC. 1, CHENGDE ROAD,
TAIPEI 103, TAIWAN
TEL: 886 2 2555 2515
FAX: 886 2 2555 2516
WEB: www.transpakcorp.com
E-mail: transpak@transpak.com.tw

Made in Taiwan

02.2017x1000

Main Features

- Easy operation, simple maintenance.
- Mechanical outside tension control. Tension can be easily set with the dial.
- Affordable for every budget.

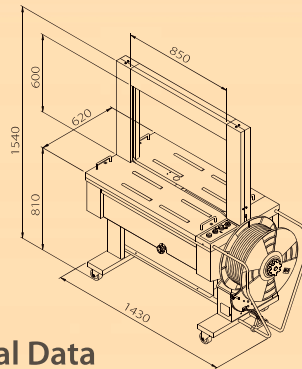
Options

- **Short feed sensor** detects whether the strap is at sealing position
- Smoke exhaust system with carbon filter
- Stainless steel frame SUS 304 (TP-6000S)

Arch Sizes

H \ W	650	850	1050	1250	1450
400					
600		Ⓢ			
800	N/A				
1000	N/A				
1200	N/A				

- Ⓢ Standard size: 850 mm (W) x 600 mm (H)
- N/A means not available
- Larger arches on request



Technical Data

Strap Width 8 mm - 15.5 mm

Strap Thickness 0.55 - 0.75 mm

Tension Range 10 - 70 kg

Speed per Minute 27 straps (60Hz, 1PH)

Net Weight 220 kg

Electrical Requirements

110V, 220V, 230V, 240V 50/60Hz 1PH
220V, 380V, 400V, 415V 50/60Hz 3PH



All specifications are subject to change without notice.

TAURIS TP-601D



02 9452-3566

sales@getpacked.com.au

Transpak offers general purpose automatic strapping machines with high reliability and performance. For wide strapping applications, we have the following models:

- Enhanced automatic PP strapping machine TP-601D
- Enhanced automatic PP strapping machine, low-table model TP-601L
- Economy automatic PP strapping machine TP-6000

AUTOMATIC STRAPPING MACHINE

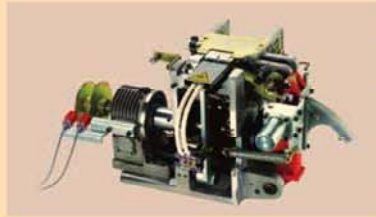
Tauris

Enhanced model

TP-601D

Tauris TP-601D is an enhanced automatic strapping machine for PP strapping (8 mm - 12 mm). With the enhanced features, Tauris is the most powerful machine and the best price to performance ratio product in its category for general applications.

Main Features



Reliable and Robust Strapping Head

Robust mechanism design and high engineering standard ensure excellent durability of the machine. Use two proximity switches to replace conventional limit switches.



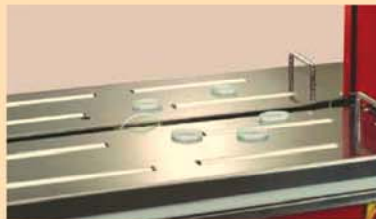
Electronic Tension Control

Strap tension can be adjusted accurately by a simple turn of the dial. Easy operation.



Auto Strap Feeding

Friendly design to feed the strap automatically from the inlet of strap feeding without the need to access to the inside of the machine. Easy strap loading.



Auto Strap Ejector

Loop-eject clears unwanted strap automatically if the machine is accidentally activated without a package. Eliminate downtime.

More Features

Short Feed Sensor

The sensor detects whether the strap is at sealing position. If not, the strapping cycle cannot be activated.

Auto Strap Refeed

The machine will automatically refeed the strap if a mis-feed occurs.

Strap End Ejector

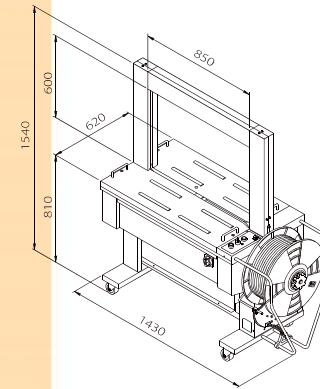
Eject end of strap automatically. Easy to clean the end of strap and get the machine ready for next coil of strap.

Multiple Methods of Cycle Initiation

The machine can be operated by several methods, such as foot pedal switch, start switch, and photo eye switch.

Options

- Smoke exhaust system with carbon filter
- Emergency stop switch
- Stainless steel frame SUS 304 (TP-601DS)



TP-601L

Low-table Model

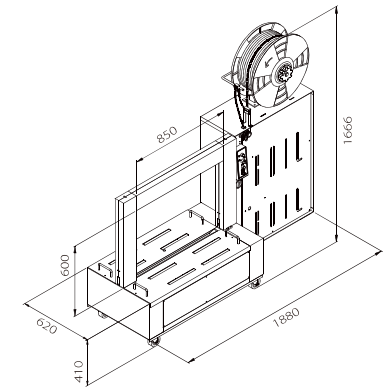
Tauris TP-601L is designed to accommodate bulky and heavy packages. Safe operation is assured as heavy packages can be strapped easily while keeping lifting effort at a minimum.

- Table height is as low as 410 mm
- Other features are the same as TP-601D



02 9452-3566

sales@getpacked.com.au



Arch Sizes

H \ W	650	850	1050	1250	1450
400					
600		Ⓢ			
800	N/A				
1000	N/A				
1200	N/A				

Ⓢ Standard size: 850 mm (W) x 600 mm (H)

- N/A means not available
- Larger arches on request

Technical Data

Strap Width 8 mm - 12 mm

Strap Thickness 0.55 - 0.75 mm

Tension Range 7 - 45 kg*

Speed per Minute 29 straps (60Hz)

Net Weight 220 kg for TP-601D
235 kg for TP-601L

Electrical Requirements

110V, 220V, 230V, 240V 50/60Hz 1PH
220V, 380V, 400V, 415V 50/60Hz 3PH

* Higher tension is on request.

